



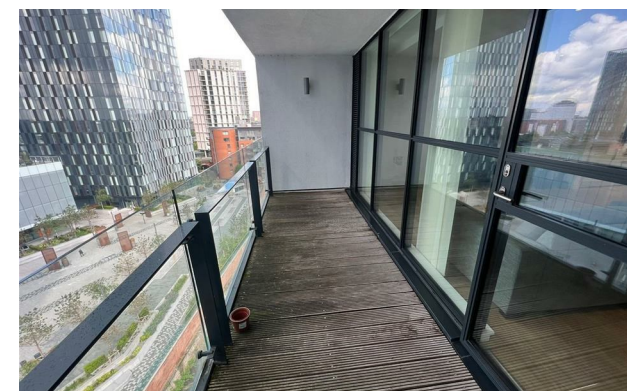
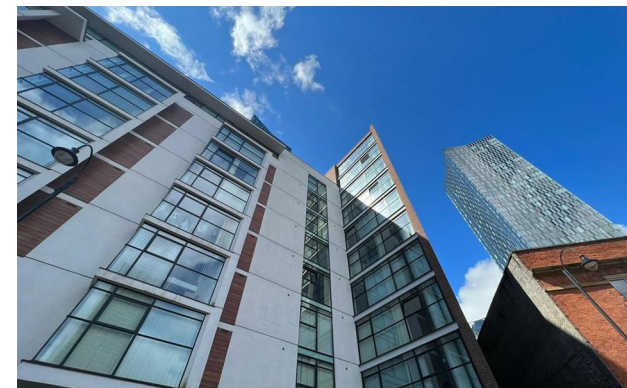
jordanfishwick

Apt 111 Hill Quays (Block B), 8 Commercial
£1,095 Per Calendar Month



Hill Quays (Block B) Manchester M15 4QY

£1,095 Per Calendar Month




The Property

Available Late October. This larger than average luxury apartment is located in Block B Hill Quays. Situated close to Deansgate & Oxford Road train stations allowing for excellent transport links, the property comprises of; entrance hall with ample storage space, spacious living room which opens to the kitchen, with white high gloss kitchen and fitted appliances: dishwasher, washing machine & oven and hob. Double sized bedroom and a separate bathroom with tiled floor and chrome heated towel rail. The property is offered Furnished. No Parking & No Pets allowed. Tax Band C. EPC Rating D.

VIDEO/PHOTO OFFERS NOT ACCEPTED - PLEASE CALL TO BOOK A VIEWING

- Available Late October
- Double Bedroom
- Close to Transport links
- Close to University
- Tax Band C
- EPC Rating D
- No Parking
- No Pets Allowed
- Furnished



Energy Efficiency Rating		
	Current	Potential
Very energy efficient - lower running costs		
(92 plus) A		82
(81-91) B		
(69-80) C		
(55-68) D	67	
(39-54) E		
(21-38) F		
(1-20) G		
Not energy efficient - higher running costs		
England & Wales		EU Directive 2002/91/EC 





These particulars are believed to be accurate but they are not guaranteed and do not form a contract. Neither Jordan Fishwick nor the vendor or lessor accept any responsibility in respect of these particulars, which are not intended to be statements or representations of fact and any intending purchaser or lessee must satisfy himself by inspection or otherwise as to the correctness of each of the statements contained in these particulars. Any floorplans on this brochure are for illustrative purposes only and are not necessarily to scale.

Offices at: Offices at Chorlton, Didsbury, Disley, Hale, Glossop, Macclesfield, Manchester Deansgate, Manchester Whitworth Street, New Mills, Sale, Wilmslow and Withington